



**BRITISH  
TRANSPORT  
POLICE**

# **BTP FIREARMS OFFICER Candidate Information Pack**

**Home Office AFO and MDP Applicants**

## **Contents**

Section One	The Role & Eligibility
Section Two	Roster & Equipment
Section Three	FAQs



BRITISH  
TRANSPORT  
POLICE

# Section One

## The Role & Eligibility

**Job Title:** Firearms Officer  
**Rank:** Constable  
**Department:** A-Specialist Operations  
**Reports to:** Team Sergeant

### **Purpose of the Role**

Our Authorised Firearms Officers provide the travelling public with a highly visible and reassuring presence, helping to achieve our objective to increase public confidence, whilst also working to detect and deter terrorism on the rail network.

The BTP Firearms Teams work closely with other units in the wider Specialist Operations umbrella, contributing to a multi-layered and multi-disciplined patrol and response strategy designed to detect, disrupt and deter terrorist and criminal activity on the railway.

All BTP Firearms Officers are trained to the national Armed Response Vehicle (ARV) role profile in line with the College of Policing National Police Firearms Training Curriculum (CoP NPFTC). This allows BTP officers to respond accordingly to spontaneous incidents within the London or local area.

### **Main Duties**

- Carry out routine armed patrols as directed, working with other Specialist Operations teams to provide high-visibility reassurance and armed patrol capability to protect the railway community, passengers and the public. This may also include deployment to other railway premises and venues if the threat deems it appropriate.
- Deploy as part of a team to spontaneous firearms-related incidents and pre-planned operations to support Force Counter Terrorism objectives, and to provide support and advice to other officers and agencies as required.
- Provide a well-trained, efficient resource capable of using a variety of tactical options to disrupt and deter terrorist activity on the railway as tasked by the CT Tasking Process, and to respond appropriately to emergency and non-urgent calls for assistance, particularly in (but not limited to) areas of armed support.
- Compile comprehensive reports on activity undertaken in order to feed information to Special Branch and other Intelligence Units.
- Build relationships with all sections of the community to break down barriers and reassure the public, and to increase intelligence gathering and support from the railway population. To undertake such other reasonable duties as required from time to time.
- Maintain the high standards of firearms training and physical fitness required as an Armed Officer.

*Officers in Specialist Operations may be called upon to work Force-wide, and may be required to travel at short notice.*

### **Essential Eligibility Criteria**

- Substantive in the rank of Constable or above
- Currently serving in an armed capacity in a Home Office force or within Ministry of Defence Police, or have served in an armed capacity in a Home Office force or Ministry of Defence Police within the previous 12 months
- Can provide certification to confirm licensing as an Authorised Firearms Officer
- Must not have any findings of guilt for complaints or discipline
- Must not currently be subject to an unsatisfactory performance review or action plan
- All mandatory training must be up to date
- Served a minimum of 12 months in your current role if you have previously transferred from a force from which we do not accept transferees

You will not be eligible to apply if you have an existing CCJ or IVA outstanding against you. Applicants who have been registered bankrupt will not be considered. Failure to disclose any of the above will lead to your application being rejected.

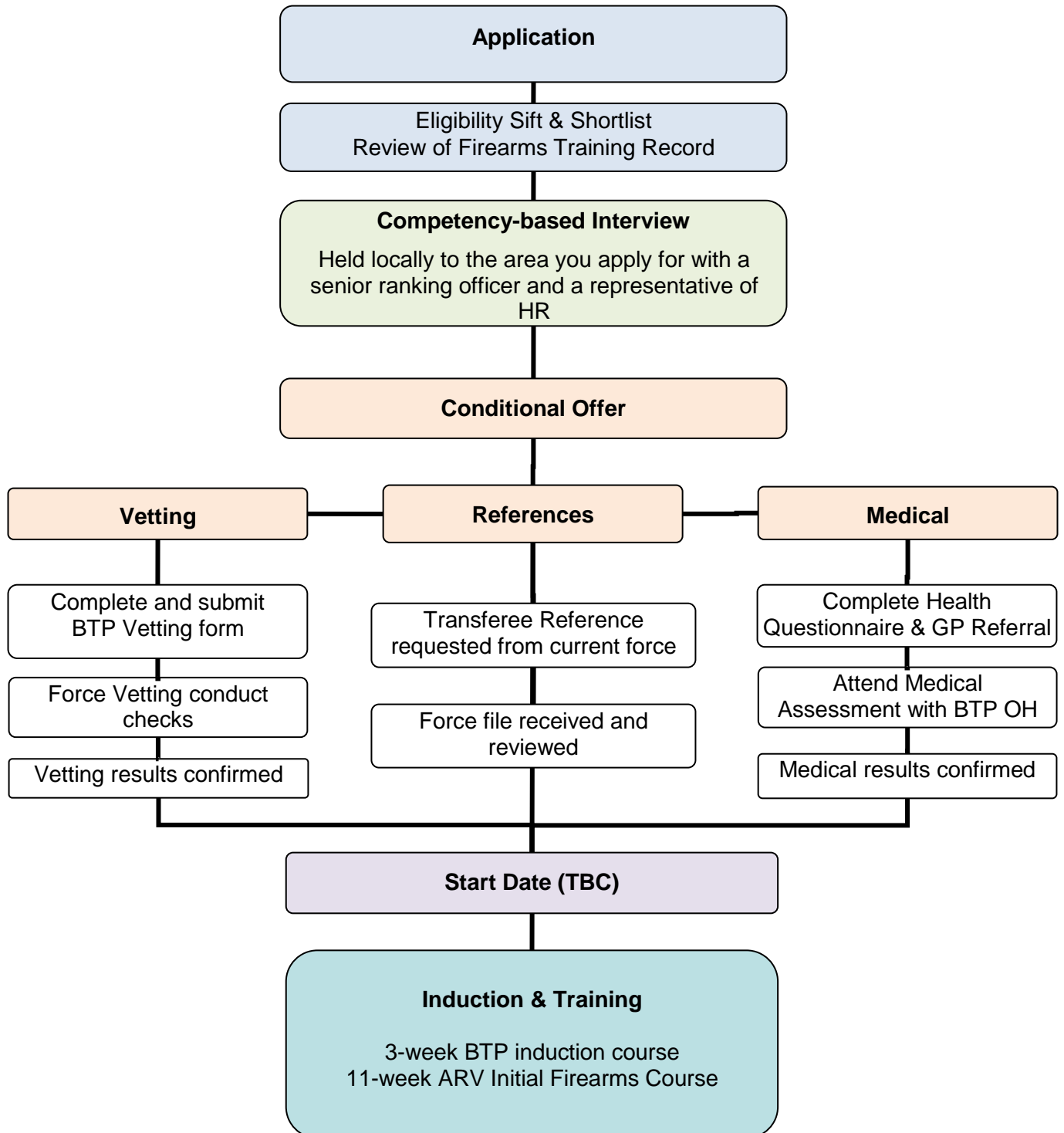
Applicants with a criminal record will be reviewed on a case by case basis, but may be rejected from the process dependent on the date and nature of the conviction. You are encouraged to email [recruitmentteam@btp.pnn.police.uk](mailto:recruitmentteam@btp.pnn.police.uk) if you have any queries on previous convictions.

### **Additional Information**

In applying for this role please be aware that:

- You must be TASER qualified, in line with the AFO and ARV role profile
- You must be willing to pass enhanced BTP Vetting and Medical checks prior to transferring to BTP
- You must be able to achieve level 9.4 on the JRFT prior to transferring to BTP
- You must be willing to attend various training courses including, if necessary, a full Initial Firearms Course, including any periods of training in residence across the country
- You must be physically and medically able to pass annual assessments, including nationally agreed eyesight, hearing and enhanced fitness standards
- Be physically able to carry additional role-specific body armour and equipment
- Be willing to submit a medical declaration annually, and agree to any subsequent medical assessments that may arise out of the submission of this declaration
- If appointed, officers must be able to attend all rostered shifts
- Applicants should be aware of the dangerous circumstances they may have to face in this front line counter terrorism role
- **This role will carry a minimum tenure of 2 years**

**Recruitment Process**  
Home Office AFO and MDP Candidates



Due to differences in officer training between Ministry of Defence Police and BTP, MDP candidates may be required to undergo a mentoring period as part of the induction and training process. This will be arranged on an individual basis in accordance with specific requirements.



# Section Three

## Equipment and Roster

## **BTP Firearms Equipment**



All BTP Firearms Officers are issued with Firearms-specific uniform and Mehler Ballistic body armour.

BTP Firearms Officers use carbines and pistols, as well as less-lethal options such as TASER and Baton gun. Firearms used within BTP have been selected for their ease of use, suitability for purpose, and adaptability to future operational needs. Their suitability for the railway environment has been a particular consideration, and models have been chosen that offer greater accuracy over longer distances and in crowded or confined areas.



## Glock 17 pistol



<b>Manufacturer</b>	Glock - Austria
<b>Calibre</b>	9mm
<b>Overall length</b>	186mm
<b>Overall height</b>	138mm
<b>Overall width</b>	30mm
<b>Barrel length</b>	114mm
<b>Weight with magazine</b>	905g
<b>Magazine Capacity</b>	Standard 17 rounds
<b>Operation</b>	Recoil operated, Semi-Automatic
<b>Features</b>	<p>Most of the Glock's components are made from high-strength polymer to provide increased durability over most steel alloys, and it has a low profile which holds the barrel axis close to the shooter's hand, reducing muzzle-rise and allowing for improved accuracy.</p> <p>The Glock is designed with three independent safety mechanisms to prevent accidental discharge, including a two-stage trigger which ensures the pistol can only ever fire semi-automatically.</p>

### Lewis and Machine Tool (LMT) CQB Carbine



<b>Manufacturer</b>	LMT, USA
<b>Calibre</b>	5.56mm
<b>Overall length</b>	Stock extended - 78 cm Stock retracted - 70 cm
<b>Barrel length</b>	27cm
<b>Weight with magazine</b>	2.9kg
<b>Magazine capacity</b>	20 rounds and 30 rounds
<b>Operation</b>	Gas operated, semi-automatic
<b>Features</b>	<p>The CQB series of carbines feature a unique, one-piece, forged upper receiver. The one-piece receiver provides greater strength and stability and features a fully "free-floating" stainless steel barrel for improved accuracy.</p> <p>The carbine is semi-automatic only and is fitted with a precision two-stage trigger designed specifically for police use.</p> <p>The carbine is fitted with a Leupold CQB sight, allowing up to three times magnification, as well as a side-mounted razor sight (not pictured) for short-range target acquisition.</p>

### Example of a four week roster

	Sun	Mon	Tues	Wed	Thurs	Fri	Sat
1	R	M10	M10	M10	M10	R	R
2	E	E	E	E	R	R	L9
3	L9	L9	R	R	E	E9	E
4	R	R	L9	L9	L9	L9	R

R = REST DAY  
 E = 07.00-15.00  
 E9 = 07.00-16.00  
 M10 = 08.00-18.00 (TRAINING DAYS)  
 L9 = 14.00-23.00



BRITISH  
TRANSPORT  
POLICE

# Section Five

FAQs

- **I'm an officer in Civil Nuclear Constabulary, am I eligible to apply?**

The BTP do not accept transferee or re-joiner applications from Officers serving in the Civil Nuclear Constabulary. This is due to the differences in training between the CNC and BTP.

This is a force-wide decision that applies to any Officer position in the BTP, and there is no scope for flexibility in this decision.

- **I'm an officer in Ministry of Defence Police, am I eligible to apply?**

As part of a special measure for recruitment into specialist posts, BTP are accepting applications from MDP officers to transfer into BTP's Firearms teams.

- **What will my salary be in BTP?**

BTP operate on the same Windsor Salary Scale as the Home Office forces, therefore your basic salary (minus allowances) and increment date will be maintained on transfer.

- **Travel entitlements**

BTP officers receive either free or heavily discounted travel via a Residential Pass for the purpose of travelling to and from work. The exact cost would depend largely on the posting you accept and the distance from your home station.

- **Where is the training based?**

The training course is primarily based in BTP's central-London Specialist Operation Unit, though portions of the training may be out-based in locations across the country. Details will be provided to you once you are confirmed on to a course, and accommodation will be provided where necessary.

*For any further queries, please contact the Recruitment Team on 0121 634 5630*